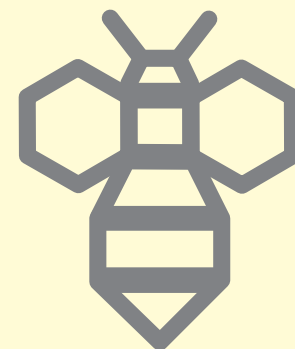


Paper Modelling

Instructor's Diagram Templates
1:1 scale templates for all 44 models.



PAPER MODELLING

Instructor's Diagram Templates

1:1 scale templates for all 44 models in
Paper Modelling, by M. Swannell

James & Rachel North



CHARLOTTE MASON BEEHIVE, MELTON MOWBRAY, LEICESTERSHIRE, U.K.

Instructor's Diagram Templates

for use with Charlotte Mason Beehive's edition of
Paper Modelling, by M. Swannell

© Copyright 2024, Charlotte Mason Beehive.

Printed and bound in England.

First published in March 2024

Cover & book design by James North
Technical drawings by James North

All rights reserved. No part of this book or any portion thereof may be reproduced
or transmitted in any form or by any means whatsoever without
prior written permission from the publisher.

Kindly note that while these templates may be used with multiple children it is intended
for use within the confines of one household only. Sharing of this curriculum outside of ones
immediate family, without permission, is a breach of copyright.

Charlotte Mason Beehive
charlottemasonbeehive.com

INTRODUCTION

THIS full set of 1:1 scale templates has been created as a special aid to parents, teachers, and students using Charlotte Mason Beehive's new edition of *Paper Modelling*, by M. Swannell. All forty-four models in *Paper Modelling* can be made using these templates. The printed version of the templates are available on 100gsm coloured sugar paper, which is the paper we recommend using for constructing the models in the book. If you are printing them at home you will need to make sure your printer is set to a custom scale of 100% or the sizing of the templates will not be correct.

There are many benefits to making use of the provided templates, as outlined below:

- **It guides the student.** In *Paper Modelling*, many of the diagrams are drawn to a scale of 1:2 (half size). This can cause confusion to some and makes it harder to rely on the diagram as a guide when extra support is needed. By having access to a template at a scale of 1:1 students and teachers can be confident that a reliable aid is at hand if needed.
- **It saves time.** Teaching Paper Sloyd can be time consuming, and often overwhelming, especially for parents and teachers who do not have prior experience with this subject. By having exact templates to hand it will dramatically cut down the amount of work needed in preparing for the lesson, eliminating the need for parents and teachers to spend time measuring and marking out projects. Parents and teachers can enjoy delivering the lesson to their students with a full understanding of how each model is constructed.
- **It is accessible to all.** One of our goals at Charlotte Mason Beehive is to bring Paper Sloyd to as many families as possible, and to make it accessible for everyone, including younger students and those who have some learning challenges. By providing templates for every model in the book, students who struggle with some of the more technical, mathematical, or practical aspects of the projects will still be able to complete the book to a good level.
- **It introduces advanced concepts gradually.** The Paper Modelling course acts as a gateway to concepts such as measuring, drawing, cutting, folding, and using mathematical instruments, such as a set square, protractor, ruler, and compass. By using the provided templates students can move at a slower pace, taking their time to learn each new concept without it detracting from their enjoyment in building the models. We recommend that parents and teachers incorporate some aspects of measuring with every model and that over time the students will work towards moving away from relying on the templates. It should be expected that students will eventually be able to draw their own template, but it does not need to be a rush to reach that stage.

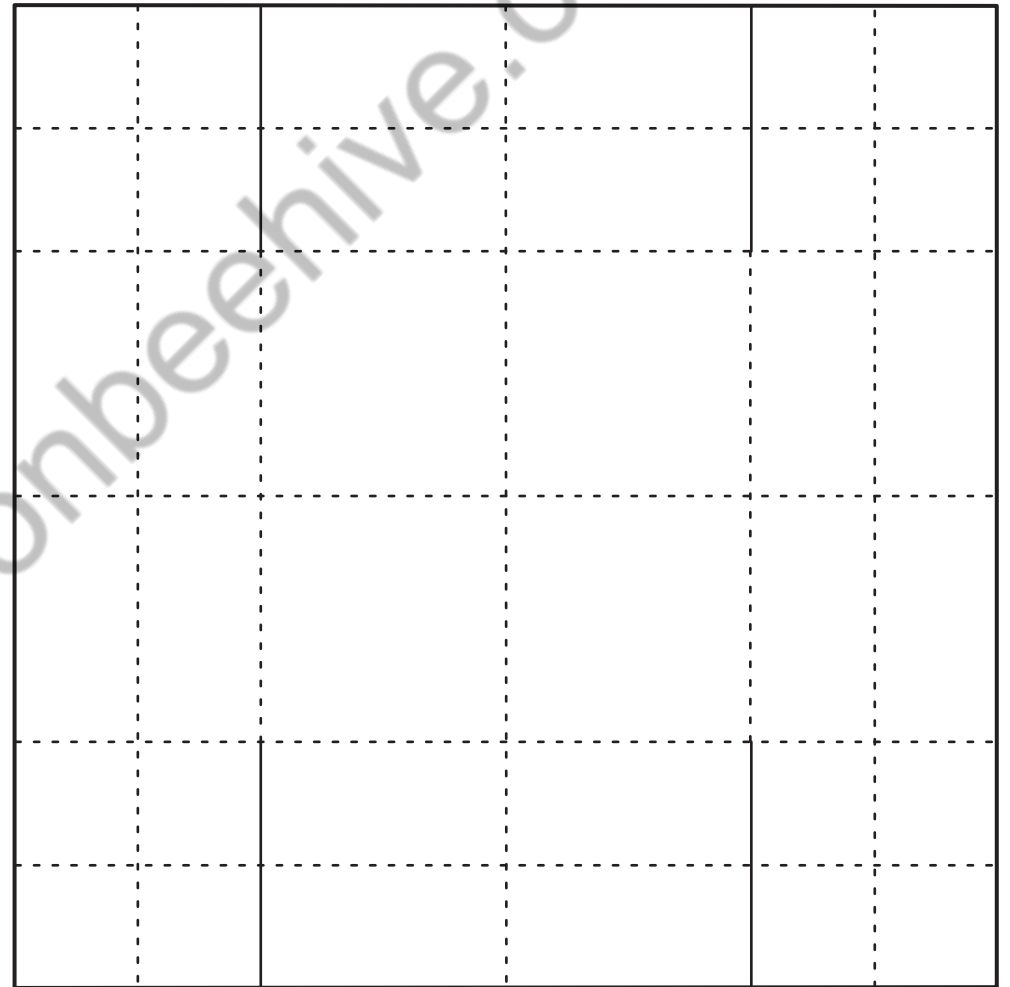
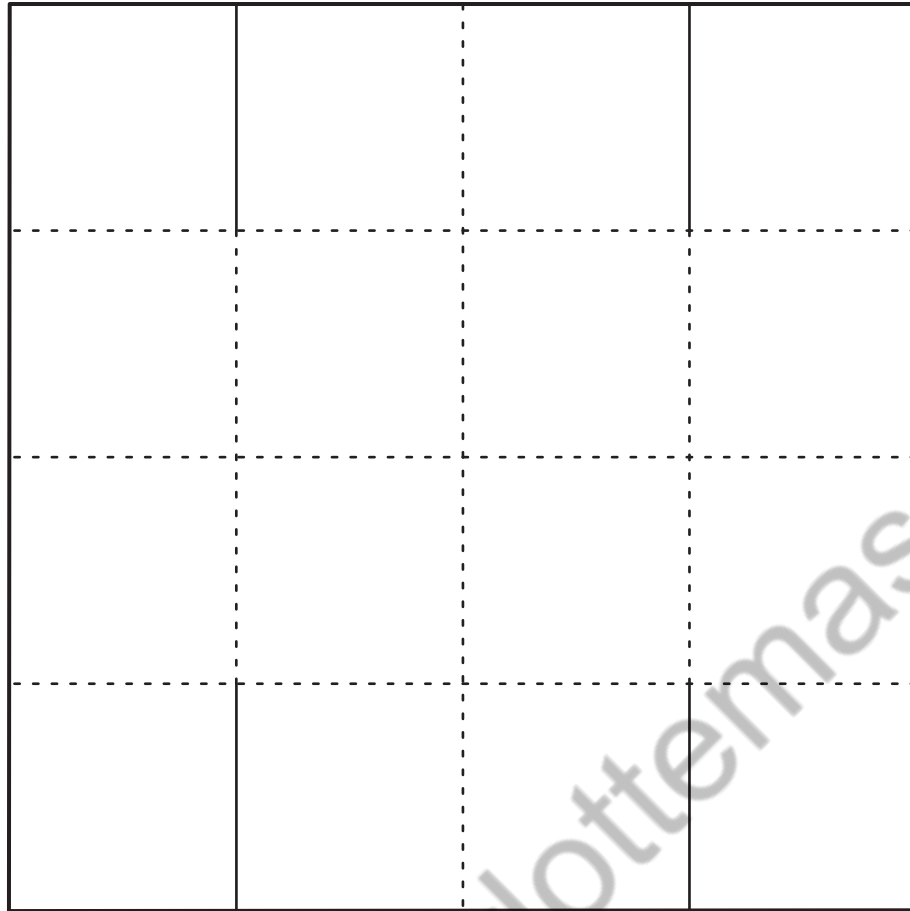
We sincerely hope that you find these templates helpful when working through the new edition of *Paper Modelling*, by M. Swannell. We love seeing pictures of families using our products so please share your Paper Sloyd creations on social media and tag @charlottesmasonbeehive.

RACHEL NORTH (March 2024)

Series I.—Square Box, No. 1.

Box. 120mm x 120mm

Lid. 120mm x 120mm



Limited preview

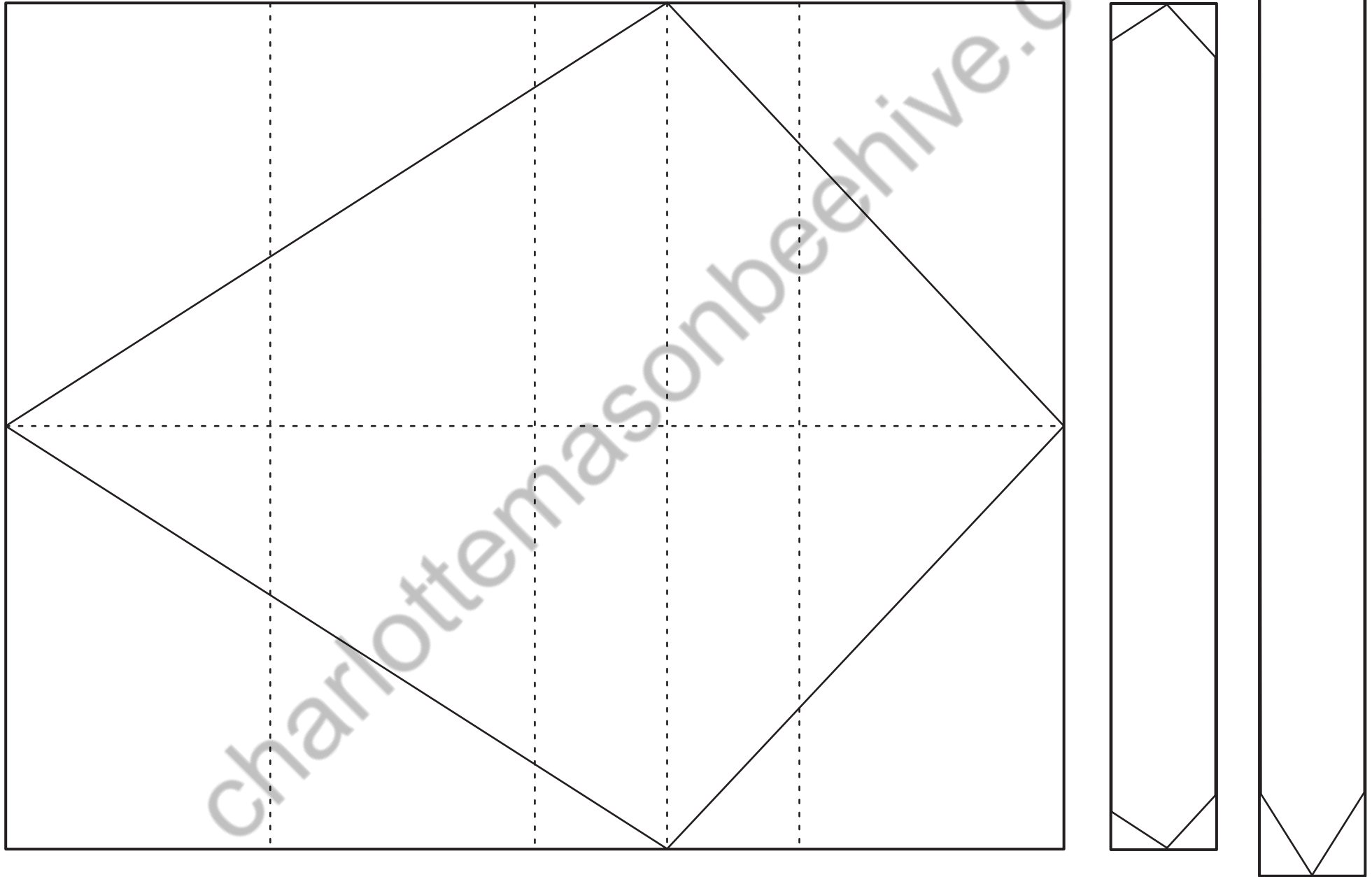
Some pages are omitted from this sample

charlottesmasonbeehive.com

Series II.—Kite, No. 1.

Kite. 200mm x 160mm

Strengthening Strips. 200mm x 20mm & 160mm x 20mm



Limited preview

Some pages are omitted from this sample

charlottesmasonbeehive.com

Series II.—Piano, No. 16.

Body. 260mm x 140mm

Leg. 40mm x 40mm

